



CATALOGUE OF OceanGLOBE WEBSITE SPECIES IDENTIFICATION PHOTOS



name _____

Original photography ©2001 Robert Perry
UCLA OceanGLOBE
Los Angeles, California
with special thanks to
Hayley O'Neill
Malibu High School student, 2001,
for her marine bird contributions.

All rights reserved. For non-profit educational purposes only.

TABLE of CONTENTS
ALPHABETIC BY TAXONOMIC GROUP

Marine Animals

Bryozoa - small colonial animals.....	5
<i>Bugula neritina</i> 1	
<i>Bugula neritina</i> 2	
<i>Membranipora</i> on <i>Macrocystis</i> 1	
<i>Membranipora</i> on <i>Macrocystis</i> 2	
<i>Membranipora</i> on <i>Macrocystis</i> 3	
<i>Thalmporella californica</i>	
Chordata - chordates	
Aves - marine birds.....	6
<i>Calidris alba</i> feeding - sanderling	
<i>Calidris alba</i> - sanderling	
<i>Catoptrophorus semipalmatus</i> - willet	
<i>Hydroprogne caspia</i> - caspian tern	
<i>Larus delawarensis</i> - ring billed gull	
<i>Larus heermani</i> adults - heerman's gull	
<i>Larus heermani</i> juv - heerman's gull	
<i>Larus</i> juvenile - gull	
<i>Larus</i> mass - gulls	
<i>Larus occidentalis</i> adult - western gull	
<i>Larus occidentalis</i> in flight - western gull	
<i>Larus philadelphia</i> in flight - bonaparte's gull	
<i>Larus philadelphia</i> - bonaparte's gull	
<i>Limosa fedoa</i> feeding - marbled godwit	
<i>Limosa fedoa</i> wading - marbled godwit	
<i>Limosa fedoa</i> - marbled godwit	
<i>Numenius phaeopus</i> - whimbrel	
<i>Pelicanus occidentalis</i> flock flying - brown pelicans	
<i>Pelicanus occidentalis</i> in flight 1 - brown pelican	
<i>Pelicanus occidentalis</i> in flight 2 - brown pelican	
Chondrichthyes - sharks and rays.....	8
<i>Platyrrhinoidis triseriata</i> - thornback	
<i>Rhinobatos productus</i> - shovelnose	
Osteichthyes - boney fishes.....	9
<i>Amphistichus argenteus</i> - barred surfperch	
<i>Hyperprosopon argenteum</i> - walleye surfperch	
<i>Scomber japonicus</i> - pacific mackerel	
<i>Umbrina roncador</i> - yellowfin croaker	
Urochordata - salps.....	9
salp fragment	
Cnidaria - stinging gelatinous animals.....	10
<i>Aglaophenia</i> close	
hydroids (<i>Obelia</i>) on kelp 2	
hydroids (<i>Obelia</i>) on kelp	
<i>Pelagia</i> beach debris - purple jelly	
<i>Sertularia</i> sp	

Crustacea - crustaceans	
Cirripedia - barnacles.....	10
<i>Balanus nubilis</i> shells	
<i>Balanus</i> sp - misc	
<i>Balanus tintinabulum</i> encrusted	
<i>Lepas anatifera</i> on <i>Macrocystis</i>	
Malacostraca - larger crustaceans.....	11
<i>Blepharipoda Emerita Lepidopa</i> - ventral - 3 sand crab species	
<i>Blepharipoda Emerita Lepidopa</i> - dorsal - 3 sand crab species	
<i>Emerita analoga</i> shells - sand crab	
<i>Emerita</i> exuvia - sand crab	
<i>Emerita</i> - sand crab	
<i>Panulirus</i> femal w sperm packet - spiny lobster	
<i>Panulirus</i> moulting carapace - spiny lobster	
Echinodermata - spiny skinned animals.....	12
aristotles lantern - live <i>S. purpuratus</i> - purple urchin	
<i>Dendraster</i> shell series - sand dollar	
<i>Dendraster</i> w parasitic <i>Balanus pacificus</i> - sand dollar w barnacle	
<i>Strongylocentrotus franciscanus</i> test aboral - red urchin	
<i>Strongylocentrotus purpuratus</i> tests oral & aboral - purple urchin	
Mollusca - soft, muscular bodied animals, most have a shell	
Bivalvia - mollusks with 2 shells.....	13
<i>Argopecten aequisulcatus</i> shell int juv w hole - scallop	
<i>Chama pellucida</i> shell series - rock oyster	
<i>Crassadoma gigantea</i> int & ext - rock scallop	
<i>Donax gouldii</i> - 3 shell series - bean clam	
<i>Lithophaga plumula</i> - date mussel	
<i>Macoma secta</i> int & ext - white sand clam	
<i>Mytilus</i> - both spp int & ext - 2 species of mussels	
<i>Mytilus californianus</i> byssus - california mussel	
<i>Parapholas californica</i> - piddock	
<i>Protothaca staminea</i> juv int & ext - littleneck clam	
<i>Tivela stultorem</i> shell series - pismo clam	
Gastropoda - snails & slugs.....	15
<i>Astraea undosa</i> opercula - wavy turban	
<i>Astraea undosa</i> - wavy turban	
<i>Conus californicus</i> shell series - california cone	
<i>Crepidula</i> dorsal & ventral - slipper shell	
<i>Fissurella volcano</i> - volcano limpet	
<i>Kelletia kelletii</i> dorsal & ventral - kellet's whelk	
<i>Littorina</i> sp - periwinkle	
<i>Lottia gigantea</i> dorsal & ventral - owl limpet	
<i>Megasercula</i> dorsal & ventral - carpenter's turret	
<i>Norrisia norrisii</i> shell series - kelp snail	
<i>Olivella biplicata</i> shell series - purple olive	
<i>Pollinices lewisii</i> aperture views - moon snail	
<i>Pteropurpura trialata</i> - 3 winged murex	
<i>Serpulorbis squamigerous</i> shell series - scaley tube snail	
<i>Tegula</i> sp - black turban snail	

Marine Plants

Angiophyta - Flowering Plants.....	18
Our 2 Angiophytes	
<i>Phyllospadix</i> w flowers	
<i>Phyllospadix</i>	
<i>Zostera</i>	
Chlorophyta - Green Algae.....	18
<i>Codium</i>	
<i>Enteromorpha</i>	
<i>Ulva</i>	
Phaeophyta - Brown Algae.....	19
<i>Cystoseira</i> base	
<i>Cystoseira</i> top	
<i>Cystoseira</i> wrack	
<i>Dictyopteris undulata</i>	
<i>Egregia</i> alt form	
<i>Egregia</i> wrack	
<i>Egregia</i>	
<i>Halidrys dioica</i>	
<i>Macrocystis</i> apical fronds	
<i>Macrocystis</i> holdfast	
<i>Macrocystis</i> sporophylls	
<i>Macrocystis</i> wrack	
<i>Pelvetia fastigiata</i>	
<i>Sargassum</i> 2	
<i>Sargassum</i>	
Rhodophyta - Red algae.....	21
<i>Bossiella californica</i>	
<i>Calliarthron sp</i>	
<i>Callophyllis sp</i>	
<i>Gelidium coulteri</i>	
<i>Gigartina</i>	
<i>Microcladia</i>	
<i>Pterocladia</i>	

ANIMALS

phylum BRYOZOA:

Nearly microscopic worm-like animals that form colonies of box shaped individuals.



Bugula neritina 1



Bugula neritina 2

(*Bugula 2* is a close up of *Bugula 1*).



Thalmporella californica



Membranipora on
Macrocyctis 1



Membranipora on
Macrocyctis 2



Membranipora on
Macrocyctis 3

(The three *Membranipora* images above are of the same specimen at different levels of magnification).

phylum CHORDATA

Chordates - complex animals with dorsal hollow nerve cords (among other commonalities)

subphylum VERTEBRATA

Chordates with vertebrae.

class AVES: Birds.



Calidris alba - sanderling



Calidris alba feeding - sanderling



Catoptrophorus semipalmatus - willet



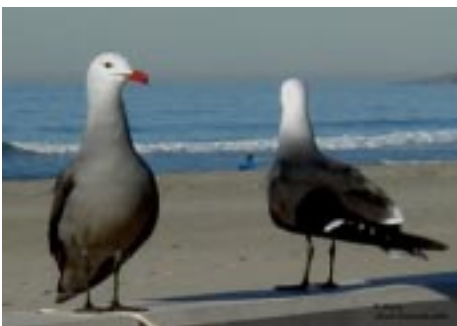
Hydroprogne caspia - caspian tern



Larus delawarensis - ring billed gull



Larus - juvenile gull



Larus heermani adults - heerman's gull



Larus heermani juv - heerman's gull



Larus mass - gulls

AVES:



Larus occidentalis
adult - western gull



Larus occidentalis in flight -
western gull



Larus philadelphia -
bonaparte's gull



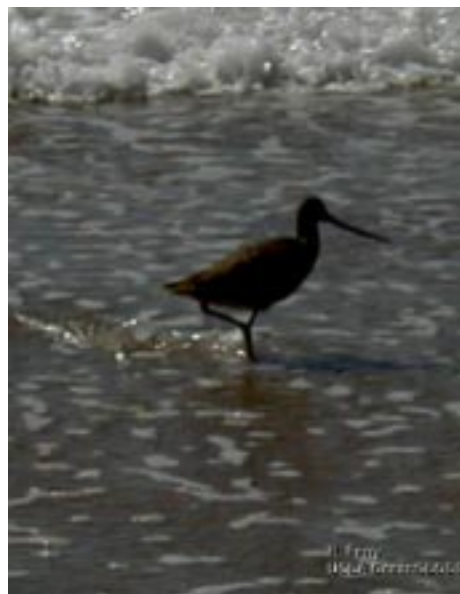
Limosa fedoa feeding -
marbled godwit



Limosa fedoa -
marbled godwit



Larus philadelphia in flight -
bonaparte's gull



Limosa fedoa wading -
marbled godwit



Numenius phaeopus -
whimbrel

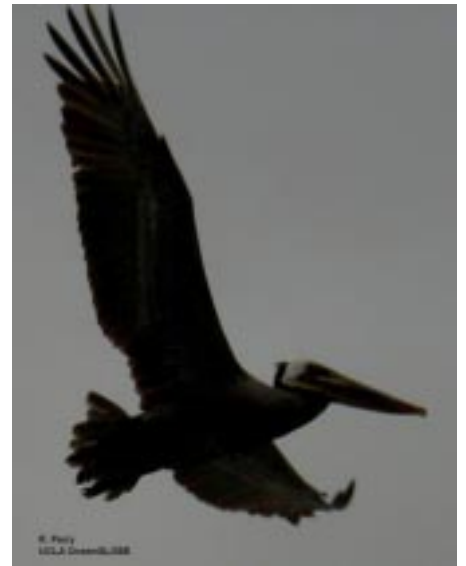
AVES:



Pelcanus occidentalis
flock/flying - brown pelicans



Pelcanus occidentalis in
flight 1- brown pelican



Pelcanus occidentalis in
flight 2- brown pelican

subphylum VERTEBRATA

class CHONDRICHTHYES:

Sharks and rays.
(with cartilage skeletons).



Platyrrhinoidis triseriata -
thornback



Rhinobatos productus -
shovelnose

subphylum VERTEBRATA

class OSTEICHTHYES:

Most of the fishes in the world have bony skeletons.



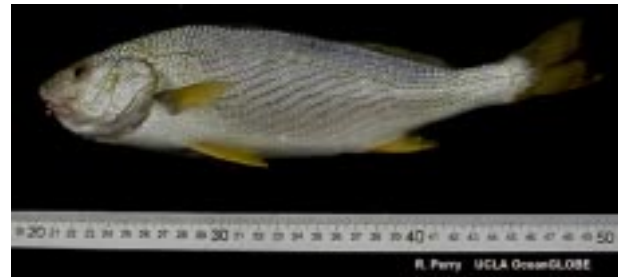
Hyperprosopon argenteum - walleye surfperch



Scomber japonicus - Pacific mackerel



Amphistichus argenteus - barred surfperch



Umbrina roncadore - yellowfin croaker

phylum CHORDATA

subphylum UROCHORDATA:

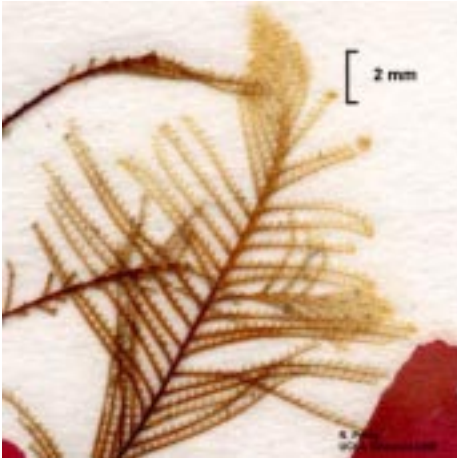
Salps and tunicates are invertebrate chordates.



salp fragment

phylum CNIDARIA:

Gelatinous animals that sting;
Many form benthic colonies.



Aglaophenia close



hydroids (*Obelia*) on kelp 2

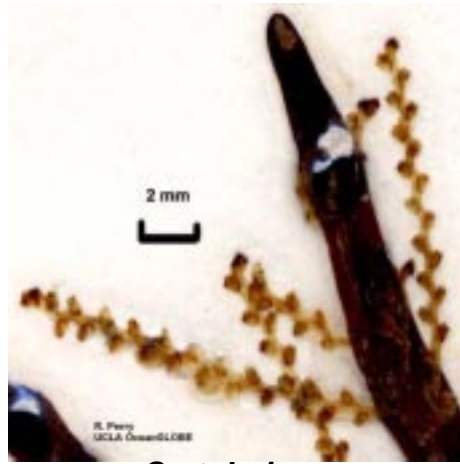


hydroids (*Obelia*) on kelp

(Note: hydroids 2 is a close up of hydroids).



Pelagia beach debris



Sertularia sp

phylum ARTHROPODA

Jointed limbed animals
with external skeletons

class CRUSTACEA

Arthropods with two pairs of
antennae and a calcified cuticle.

subclass CIRRIPEDIA: Barnacles.



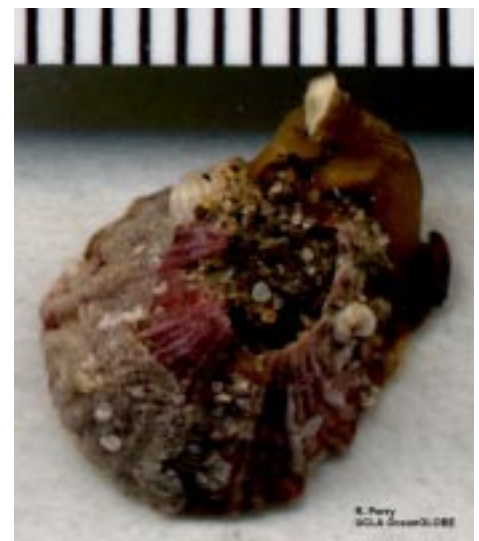
Balanus nubilis shells



Balanus sp - misc



Lepas anatifera on
Macrocyctis →



Balanus tintinabulum
encrusted shell

class CRUSTACEA

subclass MALACOSTRACA: Crabs, shrimps, lobsters, etc.



Blepharipoda Emerita
Lepidopa - dorsal -
3 sand crab species



Blepharipoda Emerita
Lepidopa - ventral - 3 sand
crab species



Emerita - sand crab



Emerita analoga shells -
sand crab



Emerita exuvia - sand crab

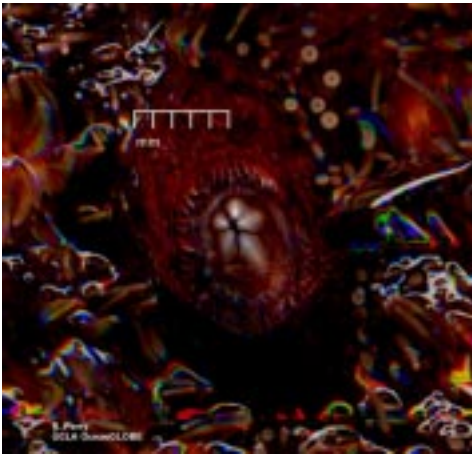


Panulirus female w sperm
packet - spiny lobster

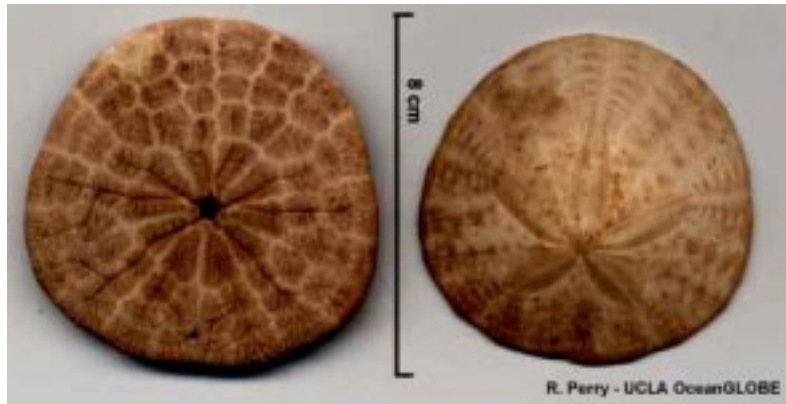


Panulirus moulting carapace -
spiny lobster

phylum ECHINODERMATA: Spiny skinned animals; five body regions, external tube feet.



aristotles lantern - live *S. purpuratus* - purple urchin



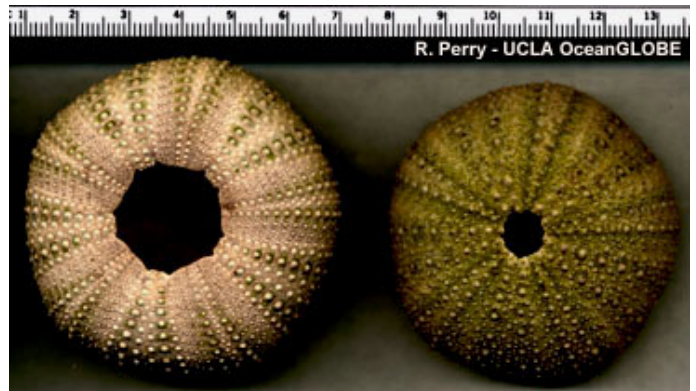
Dendraster shell series - sand dollar



Dendraster w parasitic *Balanus pacificus* - sand dollar w barnacle



Strongylocentrotus franciscanus test aboral - red urchin



Strongylocentrotus purpuratus tests oral & aboral - purple urchin

phylum MOLLUSCA

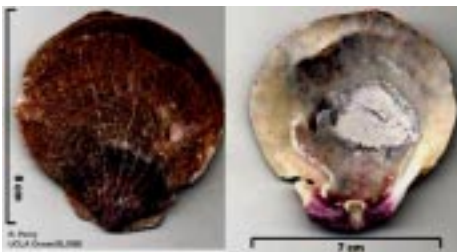
Soft, muscular bodied animals; many have shells.

class BIVALVIA:

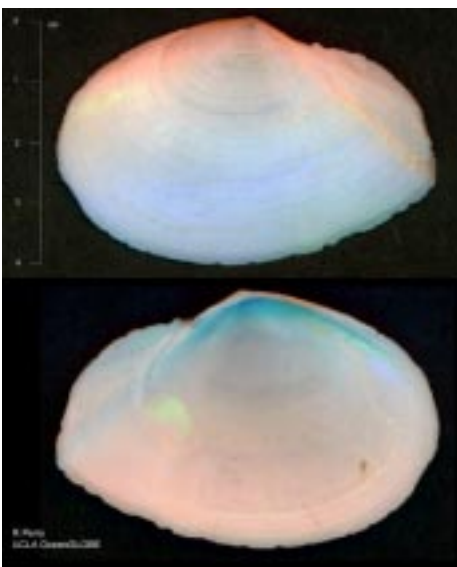
Mollusks with two shells.



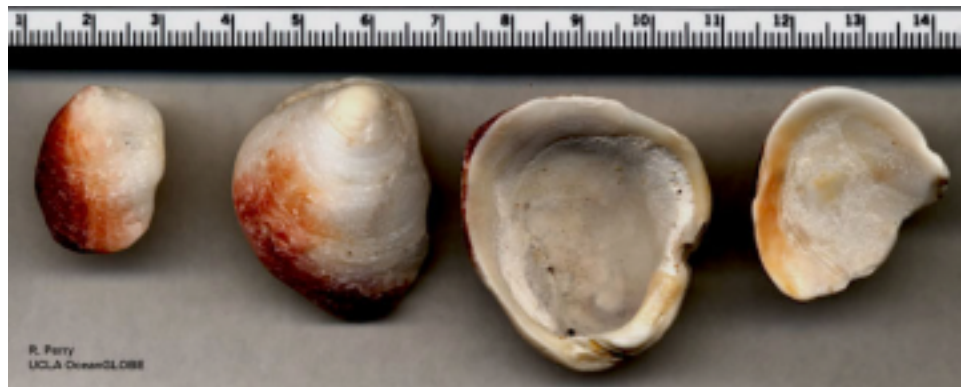
Argopecten aequisulcatus
shell int juv w hole - scallop



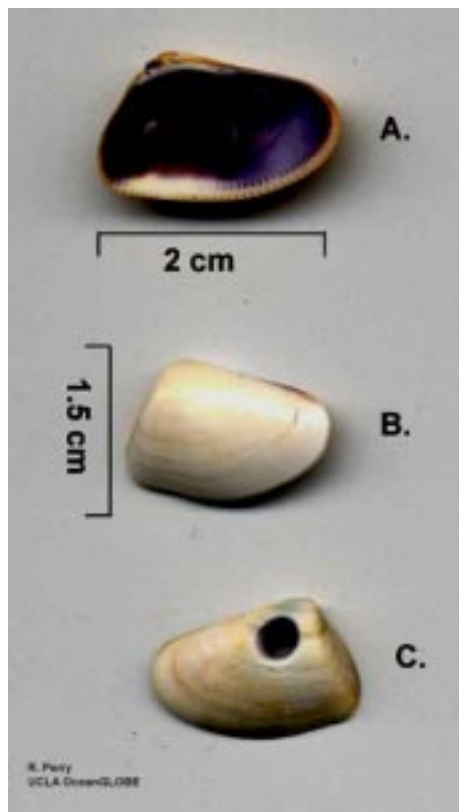
Crassadoma gigantea
int & ext - rock scallop



Macoma secta int & ext -
white sand clam



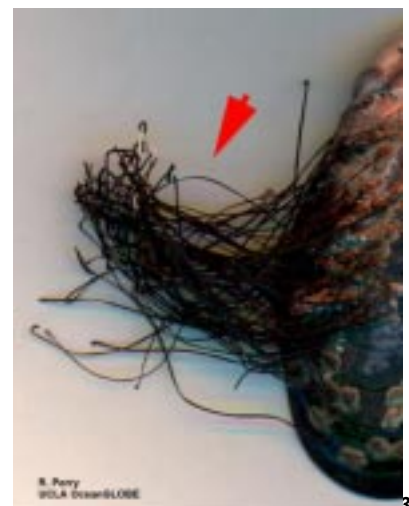
Chama pellucida
shell series - rock oyster



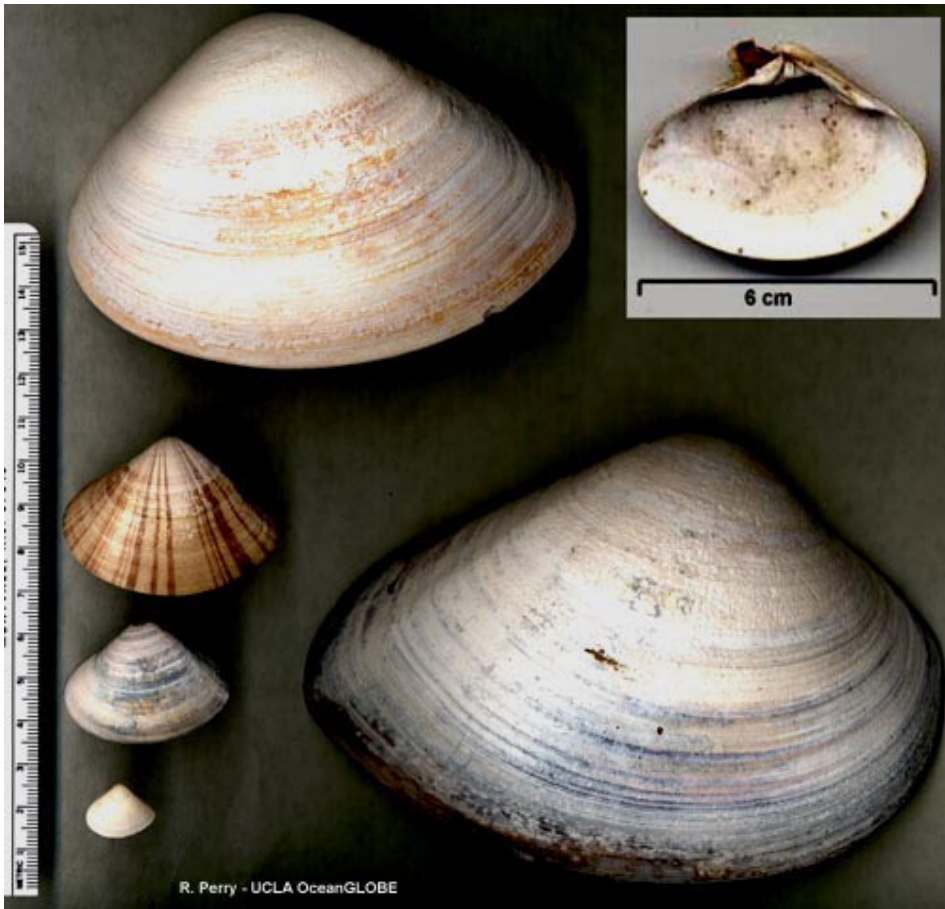
Donax gouldii -
3 shell series - bean clam



Lithophaga plumula -
date mussel



Mytilus californianus byssus -
california mussel →



Tivela stultorem shell series -
pismo clam



Protothaca juv int & ext -
littleneck clam



Mytilus - both spp int & ext - 2
species of mussels



Parapholas californica -
piddock

phylum MOLLUSCA

class GASTROPODA:

Snails and slugs; one shell or no shell at all.



Astraea undosa - wavy turban



Astraea undosa opercula - wavy turban

(an *operulum* is the "door" that plugs the aperture of a shell when the mollusk withdraws).



Conus californicus shell series - california cone



Crepidula dorsal & ventral - slipper shell



Fissurella volcano - volcano limpet

Kelletia kelletii dorsal & ventral - kellet's whelk





Littorina sp - periwinkle



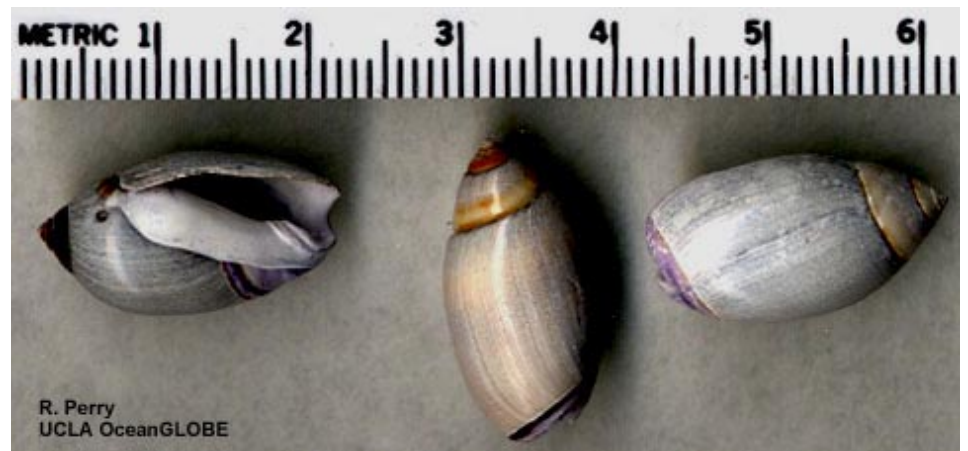
Megasercula dorsal & ventral
- carpenter's turret



Lottia gigantea dorsal & ventral - owl limpet



Norrissia norrisii shell series - kelp snail



Olivella biplicata shell series - purple olive



← *Pteropurpura trialata* -
3-winged murex



Pollinices lewisii aperture views - moon snail



Serpulorbis squamigerous
shell series - scaley tube snail



Tegula sp -
black turban snail

PLANTS

division ANGIOPHYTA: Mostly land plants with true leaves, stems roots, flowers and seeds.



Our 2 Angiophytes



Phyllospadix w flowers



Phyllospadix



Zostera

division CHLOROPHYTA: Green algae.



Codium



Enteromorpha



Ulva

division PHAEOPHYTA: Brown algae; kelp.



Cystoseira base



Cystoseira top



Cystoseira wrack



Dictyopteris undulata



Egregia alt form



Egregia wrack



← *Egregia*



Halidrys dioica



***Macrocystis* apical fronds**



***Macrocystis* fronds**



***Macrocystis* holdfast**



***Macrocystis* sporophylls**



***Macrocystis* wrack**



Pelvetia fastigiata



Sargassum



***Sargassum* 2**

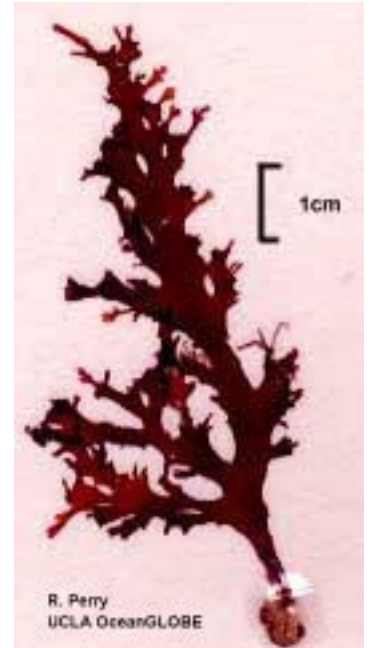
division RHODOPHYTA: Red algae.



Bossiella californica



Calliarthron sp.



Callophyllis sp



Gelidium coulteri

Microcladia →



← *Pterocladia*



Gigartina